

FAMILY ENGAGEMENT

Head Start believes that parents are a child's first and most important teacher. Head Start parents have played a vital role both inside and outside of the classroom!

Thank you, Head Start parents, for:

- Providing classroom support
- Assisting with field trips and family engagement days
- Helping with clerical tasks
- Attending home visits, conferences and workshops
- Participating in parent meetings and planning special events
- Representing parents on Head Start Policy Council
- Working at home with your children on school readiness goals

All activities were related to the Early Learning Standards and many were designed as Positive Behavior incentives that classrooms earned.



ACCOMPLISHMENTS

- PBIS: Continued recognition of the Carol B. Winters, Columbia, Francine Bunch, Clay, Mt. Joy, Lititz, and Highland centers for program-wide fidelity to Positive Behavior Intervention and Support by the PAPBS Network; the Stiegel Center was also recognized for fidelity in Spring 2017.
- Disabilities: Provided fully inclusive services to children with diagnosed disabilities (23% of total enrollment).
- Purchasing the new teaching Strategies Curriculum to embed learning opportunities that encourage exploration with hands-on activities.
- The new curriculum has an observation tool to assess fidelity to Creative Curriculum that includes elements from CLASS and the TPOT. This tool fits into our other observation tools. This was to be a goal for this year (2017-18) to implement the fidelity tool.
- Practice Based Coaching was implemented successfully with the teachers.



Lancaster County Head Start

2016-2017 Annual Report



caplanc.org

Follow us on social media



OUR MISSION

To prepare children and families for ongoing success by providing exceptional preschool and family experiences.

ENROLLMENT

Total children served	761
Funded enrollment slots	634
Average monthly enrollment	100%
Eligible families served	716

HEALTHY START

716	children have a medical home
542	are up-to-date on EPSDT
647	are up-to-date on immunizations
626	children receive a dental exam
720	are health insured

In addition to physical health, Head Start values caring for children's social and emotional health. Mental and behavioral health consultation is available on-site to children, staff, and families as needed.

PROGRAM GOALS

The program has set benchmarks for continuous improvement in each of the four goal areas.

- To increase the impact of early education services to improve the math, language, and literacy skills of children thereby closing the achievement gap for children and families.
- To enhance educational services to improve the social emotional well being of enrolled children to maximize their potential to succeed in kindergarten and beyond.
- To increase the scope and impact of Parent, Family and Community Engagement services, thereby promoting positive parent-child relationships and family well being.
- To expand program-wide use of technology to inform program data thereby strengthening compliance monitoring and managing by outcomes.

COMMUNITY PARTNERS

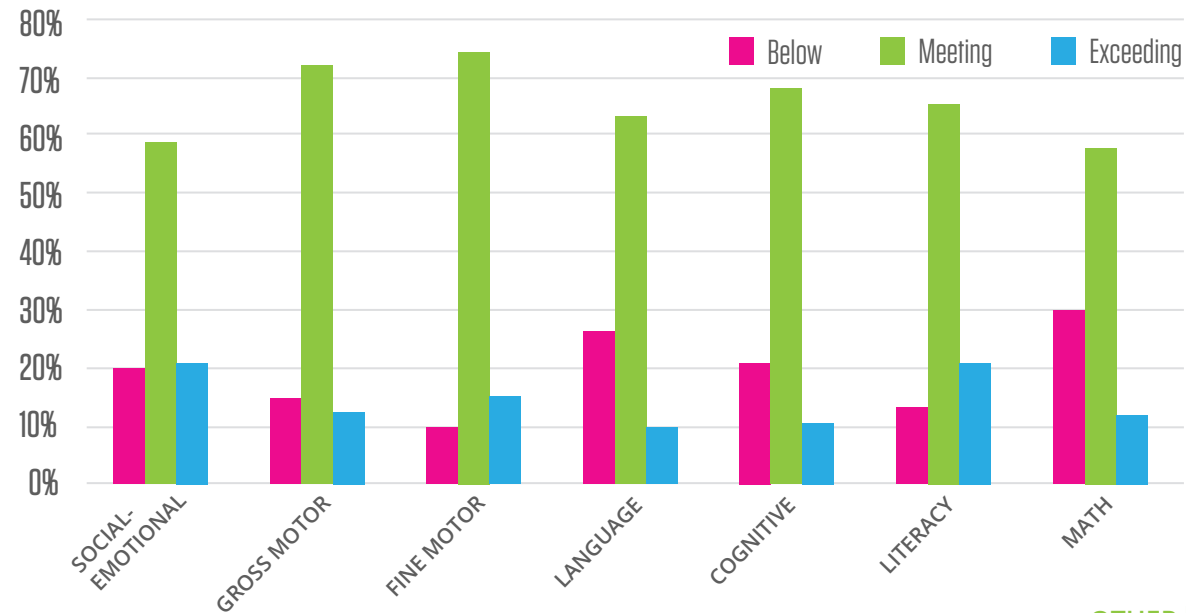
Community Partners provided:

health screenings, parent coaching, educational field trips, behavioral health consultations, school transition support, and other community resources.

CURRICULUM CORNER

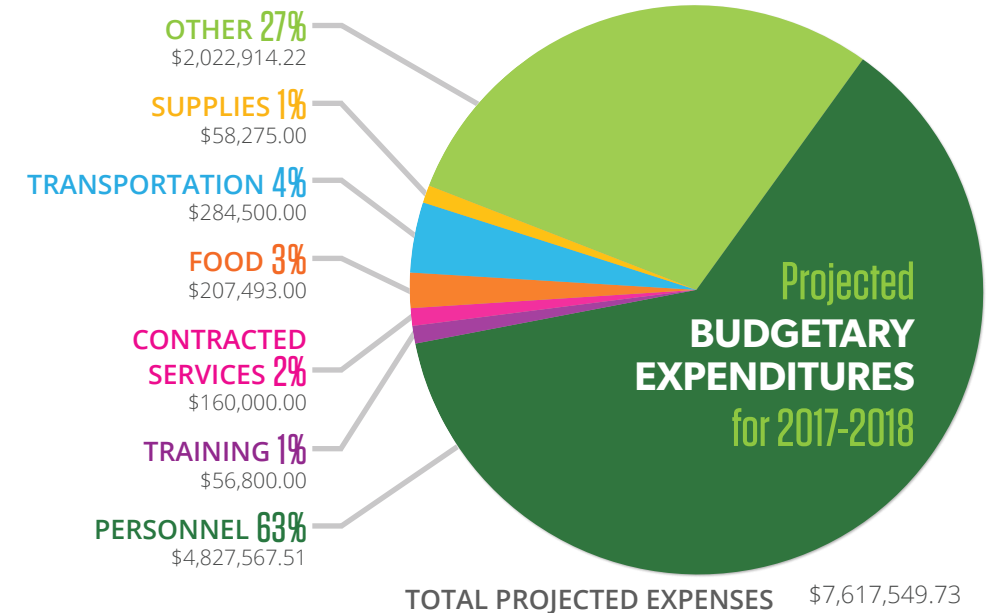
Lancaster County Head Start utilizes the Creative Curriculum as our main instructional resource. The Study Kits are used to emphasize science and mathematics topics. We base all of our instruction on the PA Early Learning Standards and Head Start Early Learning Outcomes Framework. Teachers formally assess our children's progress toward developmental objectives three times per year using the GOLD assessment system.

LCHS SPRING 2017 GOLD OUTCOMES



TOTAL EXPENDITURES FOR 2016-2017

	TOTAL PROGRAM 5/1/2016 4/30/2017	FEDERAL 5/1/2016 4/30/2017	NON-FEDERAL 5/1/2016 4/30/2017
PERSONNEL	\$ 5,506,155.04	\$ 4,428,363.11	\$ 1,077,791.93
TRAINING	\$ 50,897.66	\$ 50,897.66	\$ 0.00
CONTRACTED	\$ 330,092.94	\$ 179,752.92	\$ 150,340.02
FOOD RELATED	\$ 318,102.85	\$ 294,222.56	\$ 23,880.29
TRANSPORTATION	\$ 372,209.33	\$ 333,712.33	\$ 38,497.00
PROGRAM SUPPLIES	\$ 126,934.57	\$ 93,699.86	\$ 33,234.71
OTHER	\$ 2,338,611.03	\$ 2,052,755.88	\$ 285,855.15
TOTAL EXPENSES	\$ 9,043,003.42	\$ 7,433,404.32	\$ 1,609,599.10



MONITORING REVIEWS

Lancaster Head Start received the results of three successful federal monitoring reviews with the U.S. Department of Health and Human Services.

- The Classroom Assessment Scoring System (CLASS) review conducted at the end of 2016-2017: scores in the areas of Emotional Support and Classroom Organization fell in the high-middle range and the score in Instructional Support fell in the middle range.
- Comprehensive Services and School Readiness: This review was conducted from 2/2/17 to 2/5/17. No area of noncompliance was found.
- Leadership, Governance and Management Systems: This review was conducted from 3/14/17 to 3/15/17. No area of noncompliance was found.